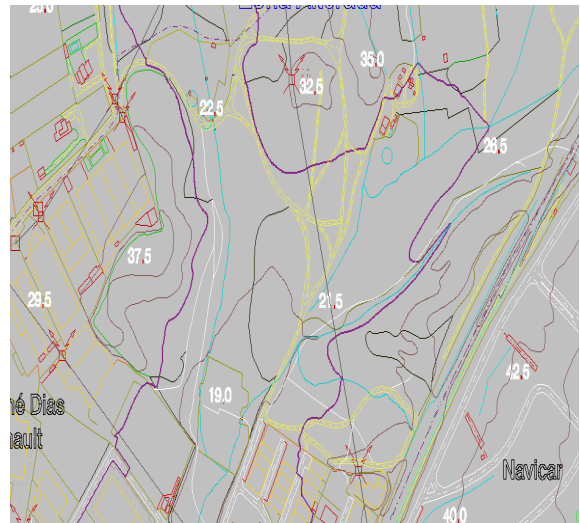


Project: GIS Conversion & Cartography

Client: A global leader in GIS services

Our client is specialised in the areas of civil, geographic, agronomic, informatics, and topographic engineering, economics, geography and regional planning, solicit adores, technical and administrative personnel, dedicated in satisfying the need of clients. They have years of experience in providing engineering services through the application of state-of-the-art technological solutions for the acquisition and manipulation of georeferenced information.

Paradigm was chosen to support them in GIS conversion of (MNT-3D) to (MNC-2D) for Portugal Municipalities



Objective:

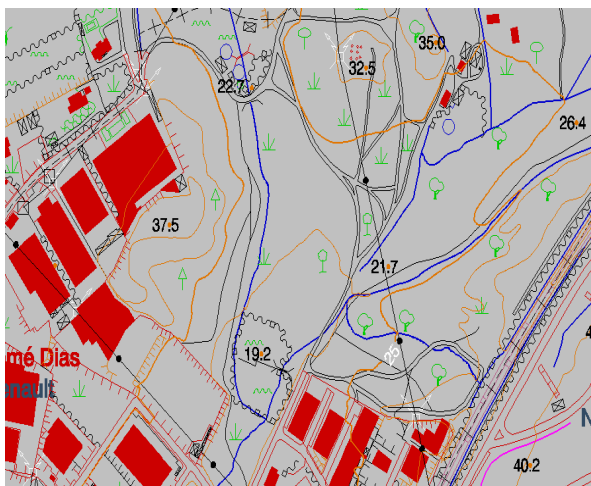
- To convert Mathematical Numerical Topography (MNT-3D) data to Mathematical Numerical Cartography (MNC-2D)
- To pattern slopes, hatch and placing text, annotation for contours, vegetation cell etc.

Services:

- Created Spot text, Placed annotation for contour, Pattered Altimetry features using the MNT data.
- Converted 3D to 2D, Line string Building data to shape .
- Provided hatch , pattern, filled polygon,Placed cell for all vegetation data, etc .
- Created a 2D MNC data

Benefits:

- Made the maps more informative and interactive
- Helps in all type of utility mapping, hardcopy printing etc.



Software Used: Microstation V8

Technology: GIS data conversion, Cartography

Area of Interest: Converted more than 150 sheets

Duration : May 2008 – March 2009

Team Size : 45+